

SMARTER MONEY HIGHER INCOME FUND

Rating: **Highly Recommended**

Report Date: June 2019

**ATCHISON
CONSULTANTS**

PRODUCT FEATURES SUMMARY	
Product	Smarter Money Higher Income Fund (Smarter Money Higher Income strategy (SMHI))
Manager	Smarter Money Investments Pty Ltd
Inception	October 2014
APIR Code	Assisted/mFund Units: SLT0052AU/SMF02 Direct Units: SLT0051AU
Distribution Dates	Quarterly
Managed Fund Platform	Macquarie Wrap BTPanorama Asgard Infinity Netwealth HUB24 Mason Stevens Powerwrap Praemium UBS OneVue uXchange Australian Money Market Managedaccounts.com.au
Asset Class	Fixed – Income
Benchmark	RBA Cash Rate +1.5% p.a. after all fees and costs
Investment Objectives	Exceed the RBA's official target cash rate by 1.5% - 3.0% p.a.net fees over a rolling 12-month periods
Minimum Investment	\$1,000
Management Fee	0.69% p.a. (including indirect costs of 0.25%)
Performance Fee	22.5% (incl. GST) of net returns excess of the RBA official cash rate plus 1.5% p.a. after management fees and other fund costs, subject to HWM
Buy/Sell Spread	0.00%/0.10%
Investment	Australian deposits, term deposits, floating rate notes, ASX listed hybrids issued by banks and companies

Guidelines Refer to Investment Governance Mandate (IGM) for portfolio construction guidelines and PDS

SUMMARY
Smarter Money Investments Pty Ltd (SMI) (ACN 153 555 867) was founded in October 2011 and is a Sydney-based boutique specialist active cash and fixed interest Australian investment management company. SMI outsources its portfolio management responsibilities to its parent company Coolabah Capital Institutional Investments Pty Ltd (CCI). At the time of writing, CCI manages around \$3 billion in cash and fixed-income investments for institutional and retail clients.

The Smarter Money Higher Income Fund (Fund) was established in October 2014 as an actively managed portfolio of Australian deposits, investment-grade bonds and hybrids issued by banks and companies that targets a return higher than the RBA's official cash rate plus 1.5% - 3.0% p.a. after fees and expenses.

- RATING CONSIDERATIONS**
- Strengths**
- Senior portfolio managers have been working together since inception of the Fund, indicating a cohesive investment environment.
 - Experienced investment team including twelve full-time professionals is appropriately resourced given three fixed-income investment strategies in addition to their other strategies.
 - Combination of quantitative valuation analysis and active trading leads to an understanding of the contribution to risk and return of the portfolio.
 - The Manager continues to demonstrate a commitment to improve resourcing and investment processes (including ongoing enhancements to quant models).

- Weaknesses**
- The Fund has not yet been managed through a complete investment cycle.
 - 22.5% performance fee is deemed high on a relative basis.
 - With growing FUM the potential to continue to deliver strong excess returns may diminish due to inability to take meaningful positions.
 - The risk of key staff departures may have an adverse effect while this has been partially addressed through equity sharing arrangements.

Overall, Atchison Consultants rate the Fund as:

RATING			
Not Investment Grade	Investment Grade	Recommended	Highly Recommended

Table of Contents

Rating Definitions	3
Organisation	4
Business Philosophy.....	4
People and Resources	5
Track Record	9
Investment Process	10
Investment Philosophy	10
Investment Style	11
Investment Process	11
Risk Management and Compliance	16
Risk Management	16
Compliance	17
Fees and Costs	17
Performance	17
Strengths.....	18
Weaknesses	18
Rating Summary	18
Appendix 1: Portfolio Construction – Asset-Selection Process	19
Appendix 2: Smarter Money Higher Income Fund– Strategy Performance Analysis	20
Sources of Information	22
Report Expiry Date	22
Statement of Analyst Interest and Certification, Warning and Disclosure	22
Atchison Consultants	23

Disclaimer: Atchison Consultants recommend that investors read the detailed information contained in the Product Disclosure Document. Investors should read the Analyst Interest and Certification, Warning (General Advice Only) and Disclosure (Commissioned Research) at the end of this report.

Rating Definitions

Atchison Consultants' ratings are multi-factor, encompassing: ownership and organisation, staff, investment objective and process, governance and compliance, customer service, liquidity, fees and other costs and performance.

Highly Recommended – The manager and its product have excelled across all of our assessment criteria. We expect the manager's product to perform well ahead of a reasonably appropriate risk and return objective for the product over a full investment cycle.

Recommended – The manager's product has consistently outperformed the median manager across our assessment criteria. We expect the manager to perform ahead of a reasonably appropriate risk and return objective for the product over a full investment cycle.

Investment Grade – The manager satisfies most, if not all, of our rating criteria. We are satisfied in its ability to perform at a reasonably appropriate risk and return objective over a full investment cycle. This rating can apply to new or recently established managers who demonstrate they have in place the experience, resources and systems which we expect will result in performance at or above the reasonably appropriate investment objective for the product over a full investment cycle. Similarly, it can apply to a new product from a new or established manager.

Not Investment Grade – The manager rates poorly in all or most of our ratings criteria.

Disclaimer: Atchison Consultants recommend that investors read the detailed information contained in the Product Disclosure Document. Investors should read the Analyst Interest and Certification, Warning (General Advice Only) and Disclosure (Commissioned Research) at the end of this report.

Organisation

Coolabah Capital Institutional Investments Pty Ltd (CCI) is a Sydney-based boutique active cash and fixed interest investment management company founded by Christopher Joye and Darren Harvey in 2011.

CCI is 75% owed by its investment team and 25% owned by a multi-billion-dollar family company, AMB holdings.

From 1 July 2019, CCI moved from 50% ownership to be the sole owner of Smarter Money Investments Pty Ltd (SMI). They continue to be responsible for managing SMI's portfolio along with other institutional mandates, with approximately \$3 billion in assets under management (at the time of writing). The Fund size is approximately \$351 million (June 2019).

SMI is the investment manager and CCI is the sub-manager for the Smarter Money Higher Income Strategy (SMHI), which is an actively managed portfolio of Australian deposits, investment-grade bonds and hybrids issued by banks and companies, that in combination targets return that exceed the RBA's official cash rate plus 1.5% - 3% pa. after fees and ordinary expenses over rolling 12-month periods.

SMHI targets adding-value via active asset-selection using a range of valuation models with the aim of (1) delivering lower portfolio volatility than traditional cash/bond funds and (2) providing superior risk-adjusted returns or alpha without explicitly seeking interest rate risk, credit risk or liquidity risk. SMHI was established in October 2014.

The responsible entity (RE) is EQT Responsible Entity Services Limited. The administrator is Mainstream Fund Services Pty Ltd.

Business Philosophy

At a macro level, CCI believes that Australian superannuation funds could improve their risk-adjusted return outcomes by addressing the bias towards Australian and international equities, unlisted commercial property, hedge funds and private equity (i.e. equities overall). Based on CCI's empirical research, it argues that higher portfolio weights to actively managed cash securities, FRNs, and fixed rate bonds can deliver superior risk and inflation-adjusted returns than the current standard diversified balanced fund, which has an average allocation of over 70% to listed and unlisted equities.

CCI believes that the Australian cash and fixed-income markets are especially inefficient vis-à-vis other investment categories due to the highly opaque/ non-transparent nature of price discovery. This is given that there is no formal requirement to publicly report the prices and volumes of bond transactions in Australia (the ASX-owned Austraclear platform does not release this data in contrast to ASX traded equities). This means that there is very limited visibility on asset price movements that leads to bond mispricing's that can create opportunities for active asset-selectors.

SMI/CCI's approach to marketing SMHI is to distribute the Fund to institutional and retail investors. CCI has several product distribution professionals to support the growth of SMHI and SMI's two other retail funds in addition to their other products.

CCI's strategy is to grow the business in accordance with its investment style, being an active cash and variable debt/hybrid securities manager focussed on delivering positive absolute returns in all cycles. This active investment approach seeks to identify securities that have been inefficiently priced by the market—in isolation or relative to key peers—and

Disclaimer: Atchison Consultants recommend that investors read the detailed information contained in the Product Disclosure Document. Investors should read the Analyst Interest and Certification, Warning (General Advice Only) and Disclosure (Commissioned Research) at the end of this report.

are therefore deemed inexpensive and attractive on a risk versus return basis.

SMI estimates there to be no capacity issues for their funds up to \$10 billion. This is based on peers and the size of the Australian investment-grade bond universe, which is valued at approximately \$1.5 trillion. They currently manage around \$3 billion (at the time of writing), the Fund size as of June 2019 is \$351 million.

People and Resources

CCI's full-time investment team consists of two senior portfolio managers (PMs), who also have analyst responsibilities, two portfolio managers/quant analysts, six analysts (4x credit analysts and two senior data scientists), a portfolio management director, portfolio analyst, as well as a senior operations analyst. The team has progressively expanded over the Fund's history, with a new office opened in Melbourne and an upcoming expansion into an additional Sydney CBD office.

The two senior PMs are regarded as highly experienced in managing and trading portfolios, Australian cash securities and bonds with a proven seven-year plus track-record, applying their highly active style via SMAC.

The two PMs joined in 2016/17 and assist with execution in the unlisted bond and ASX markets while also having quantitative research responsibilities.

The credit analysts have previously held senior roles within the credit and debt capital markets divisions at major financial institutions or asset managers and have been recruited on the following attributes:

- Extensive multi-cycle experience
- Buy-side credit/risk analyst experience

- Funds management/bank trading experience
- Personal knowledge/relationship with PMs

CCI's active security selection and investment style is an ongoing process, focussing on bond valuation mispricing, based on bottom-up and top-down quantitative valuation analysis. Many different models are applied in to identify securities that are trading below fair value with acceptable levels of risk. This is augmented by a macroeconomic and traditional asset due diligence overlay. Full credit analyst reviews of an asset can be instigated by any of the four PMs.

Adding any new investment to the Fund is dependent on the asset receiving a positive credit recommendation from one of the independent analysts, which is a process that grants analysts veto rights over all investments on risk grounds only. The two senior PMs individually also have veto rights on all positions and must jointly agree on investments.

Biographies of the investment team as follows:

Darren Harvey is a co-founder of SMI/CCI and is Co-CIO and Portfolio Manager. Harvey has 32 years of experience in investment management in Australia and overseas with Deutsche Bank as a proprietary trader running fixed-income and derivatives investments across both the Australian and global markets. He retired from Deutsche Bank in 1999 to run his own family office. Harvey is responsible for:

- Macro-market insights
- Risk management
- Compliance
- Mentoring

Christopher Joye is co-founder of SMI/CCI and is Co-CIO and Portfolio Manager. Joye has 19 years capital markets experience gained as an investment banker, economist and fund manager having previously worked for Goldman Sachs in London and

Disclaimer: Atchison Consultants recommend that investors read the detailed information contained in the Product Disclosure Document. Investors should read the Analyst Interest and Certification, Warning (General Advice Only) and Disclosure (Commissioned Research) at the end of this report.

Sydney in mergers and acquisitions and principal investments and the Reserve Bank of Australia in special projects. He was an economic advisor to the Howard and Rudd Governments and served as a Director of The Menzies Research Centre think-tank. Joye was also the founder and portfolio manager of funds management and research group, Rismark International, which was sold to an investment bank in 2010. Joye's main responsibilities at SMI are:

- Idea generation
- Trade execution/strategy
- Portfolio management
- Portfolio construction
- Asset pricing
- Credit research
- Macroeconomic research
- Quantitative research
- General business management and the running of the Portfolio Management (PMT), Credit Research (CRT), Data Science (DST), Finance, Operations, Risk (FORT) and Sales and Product (SPT) teams.

Ashley Kabel joined CCI in 2017 in a full-time role as a quantitative analyst and junior portfolio manager. Ashley was Director of Quantitative Strategies at the award-winning and strongly performing FX hedge fund, The Cambridge Strategy, between 2012 and 2016, based in London. At Cambridge Ashley managed US\$250m (and a small team) in medium-term, quant-based FX strategies spanning 2012-2016, outperforming FX beta indices and FX and Macro Hedge Fund indices. Prior to Cambridge, Ashley served as an investment analyst with portfolio management responsibilities covering FX, equities and fixed income at the \$800bn fund manager, Invesco between 2005 and 2012, based in Melbourne. At Invesco he helped develop, analyse and manage multiple quant strategies including direct execution of fixed-income portfolios. At CCI he is responsible for ASX execution, quant research and general portfolio management duties. Kabel was promoted to portfolio manager in March 2018.

Dr Stephen Parker joined CCI in 2016 as a full-time risk analyst and junior portfolio manager. Prior to this, Stephen was a future trader at Star Beta with a focus on Australian and US government bonds and the formulation of quantitative trading strategies and risk management models. Dr Parker obtained his PhD degree in 2013 from UNSW in Astrophysics. At CCI he is responsible for OTC bond execution, quant research and general portfolio management duties. Dr Parker was promoted to portfolio manager in March 2018.

Andrew McLachlan is a full-time senior credit analyst who joined CCI in 2015. He is an experienced buy-side professional who was previously the senior credit strategist at the \$5.5 billion Australian fixed-income manager Vianova between 2008 and 2013 and its successor Brookline Partners (2014-2015) where he was responsible for all quantitative and qualitative credit analysis and valuation, as well as having input into macroeconomic strategy. Prior to Vianova, McLachlan was a senior credit analyst at the \$6 billion fixed-income fund manager Perennial Investment Partners (2001-2008) where he designed and implemented Perennial's in-house credit risk pricing models. He started his commercial career as an economist at NAB focussing on industrial analysis and forecasting. McLachlan is well known in the institutional markets. At CCI he is involved in credit risk analysis, quantitative asset pricing and general due diligence.

Jason Lindeman joined CCI in 2017 in a full-time role as a senior credit analyst. Jason has over 15 years buy-side experience specialising in fundamental and technical credit analysis across the capital structure. Previously at Hadron Capital LLP, a London based global relative value and event driven multi-asset class hedge fund, he was jointly responsible for the Credit Long/Short absolute return portfolio. Prior to Hadron, Jason was the Credit Portfolio Manager at RBC Capital Markets London, responsible for the European Credit

Disclaimer: Atchison Consultants recommend that investors read the detailed information contained in the Product Disclosure Document. Investors should read the Analyst Interest and Certification, Warning (General Advice Only) and Disclosure (Commissioned Research) at the end of this report.

Proprietary Trading Portfolio. He has also worked at Credit Suisse and BAB Corporate Banking with roles involving in credit risk management. Jason has a Bachelor of Economics and Post Graduate Diploma in Applied Finance and Investment.

Mathew Barrie joined CCI in 2019 in a full-time role as a credit analyst. Mat previously worked as an Assistant Manager in corporate finance with BDO focussing on valuations, M&A advisory, financial modelling and due diligence and as an undergraduate engineer at Winslow Civil Constructors. He graduated from Monash University with a Bachelor of Commerce and Bachelor of Engineering (Civil) with 1st Class Honours having completed his VCE at St Kevin's College with a VCE Enter Score of 98.55, where he was a School Prefect and the recipient of the Edmund Rice Medal for the exhibition of excellence and contribution to the College.

Sebastian Wiech joined CCI in 2019 as a Junior Credit Analyst after graduating from the University of Adelaide with a Bachelor of Science majoring in Physics and a Bachelor of Finance. He played football at SANFL level for the Sturt Football Club before taking the opportunity to study for a year at Purdue University in the United States (where he joined the Delta Upsilon fraternity). Seb studied physics at Purdue and took interest in computational physics and quantum mechanics. Following his return from the US, Seb took an internship in Bangalore, India and developed data extraction methods at Infosys Limited.

Ying Yi Ann Cheng joined CCI in 2017 as a full-time portfolio management director focussing on market research, analysis and technical factors, while also assuming responsibility for external stakeholder management. Cheng has spent most of her career at Citibank in London, where she was a Vice President, specialising in G10 and Emerging Market currencies, advising hedge fund clients and sovereign asset managers on alpha generating and risk

management strategies. Cheng was most recently at RBC Capital Markets working within fixed-income and credit. Prior to the sell side, Ying Yi had interned at Colonial First State and PwC in various quantitative roles. After receiving a 99.95 ATAR for her HSC studies, ranking her in the top 0.05% of all secondary students, Ying Yi graduated with honours in Actuarial Science from the University of New South Wales.

Kai Lin joined CCI in 2017 as a full-time Senior Data Scientist focusing on assets pricing and portfolio management. Prior to joining CCI, Lin worked as a data scientist at CBA where he built machine learning models to protect consumer propensities. Lin has also been involved in data mining projects with heavy use of R, Python, Hadoop, Hive, SQL and Linux tools. Prior to CBA Kai interned as signal processing researcher at Cochlear. Kai graduated from UNSW with 1st Class Honours and the University Medal in his Bachelor of Engineering (Electrical) program where his thesis researched pose estimation and trajectory matching. He is currently completing a Masters of Statistics at UNSW.

Dr Ainslie Yuen joined CCI in July 2018 in a full-time role as a Senior Data Scientist focusing on asset pricing and portfolio management. Yuen was previously a Vice President at Goldman Sachs in New York, where she worked as a Strategist in the Special Situations Group, a principal investments area, concentrating on ABS and RMBS performance, amongst other things. Yuen was awarded a PhD in Engineering (Statistical Signal Processing Laboratory) in 2005 from Cambridge University where she focussed on statistical analysis of inter-trade durations of stocks and their relationship with price volatility using wavelets, fractal, multifractal, and correlation analysis techniques. Ainslie has received numerous awards, including the King's College Wilkinson Fund award for a one month research visit to Paris (2005), a Cambridge

Disclaimer: Atchison Consultants recommend that investors read the detailed information contained in the Product Disclosure Document. Investors should read the Analyst Interest and Certification, Warning (General Advice Only) and Disclosure (Commissioned Research) at the end of this report.

University Engineering Department award for a two month research visit to Boston in 2002, the University of Western Australia Telecommunications Society Prize, a Vacation Scholarship at the Radiophysics Division of the CSIRO, the Association of Mining and Exploration Companies Medal, and the Western Australian Government General Exhibition (for the top twenty students in Western Australia in 1989).

Timothy Good joined CCI in 2019 in a full-time role as a Portfolio Analyst. Tim previously worked as a Trader at Exponential Trading, a proprietary-trading company, moving from Brisbane to join their team as a Graduate in July 2018. In this role, Tim was responsible for trade strategy generation and execution, as well as data analysis. Prior to this, Tim completed a Dual Bachelor's Degree at the University of Queensland, graduating with a High Distinction in a Bachelor of Commerce majoring in Finance, and a Bachelor of Science majoring in Mathematics (extended). Whilst completing his tertiary qualifications, Tim served as a Data Scientist at Max Kelsen, a software engineering firm in Brisbane. In this role, Tim conducted market research and analysis for a range of clients.

Param Singh joined CCI as a senior operation analyst. Param oversees the middle office function on a day-to-day basis. Prior to joining CCI, Param has worked at global custodian such as State Street, BNP, Westpac etc, involving in projects ranging from onboarding of IM clients on to the custodian clients, conversion of mutual trade process to STP and automated trade processing platforms. Param has a bachelor's degree in Business Accounting from Central Queensland University Rockhampton.

Ed Teh is a full-time Chief Risk Officer with CCI, joining the business in 2013. Teh has more than 19 years relevant research and funds management experience. Teh has previously worked as Director of Debt Products & Global Risk at Bank of America Merrill Lynch as well as a Senior Credit Analyst of

fixed income credit research at ING Investment Management and Assistant Vice President of Corporate Risk Management at Citigroup. Teh is responsible for credit risk analysis, risk management, compliance and governance reporting.

Oliver Reynolds joined in 2018 as CFO. Oliver previously held a dual role as CFO/COO of the XTB Group where he was responsible for the financial management and operational capabilities of over 60 XTBs listed on the ASX. He was also a member of the Investment and Risk Committees and was responsible for the operations of Challis Investment Partners, a market maker for XTBs. Prior to that, Oliver served as Vice President, Operations at Blackrock Asset Management, reporting to the Australian COO and APAC Head of Investment Operations. Oliver has also been significantly involved in the establishment and growth of several managed funds in Australia, Hong Kong and the UK. Oliver is a CFA Charterholder and holds a Bachelor of Commerce and Administration from Victoria University of Wellington.

Brianna Fallins joined in 2017 as a Financial Analyst and Executive Support Specialist. Brianna works within financial control, reporting to the CFO. Brianna is currently undertaking a Bachelor of Commerce - Professional Accounting at Macquarie University. Prior to her current role, Brianna worked at a leading international design company, Unispace Global, where she held a dual role in the Executive Support and Finance Team.

Melda Donnelly was appointed Chair of CCI's Board, Investment Committee and Risk & Compliance Committee in 2015. She is responsible for managing processes relating to compliance, governance, strategy, performance and risk management. Ms Donnelly is a director of Treasury Group (ASX: TRG/mkt cap \$200m and \$49bn in FUM) and a member of HESTA's (\$32bn FUM) investment advisory board. Ms Donnelly's previous work

Disclaimer: Atchison Consultants recommend that investors read the detailed information contained in the Product Disclosure Document. Investors should read the Analyst Interest and Certification, Warning (General Advice Only) and Disclosure (Commissioned Research) at the end of this report.

experience includes being CEO of the Queensland Investment Corporation, Deputy Managing Director of ANZ Funds Management, Managing Director of ANZ Trustees and chairperson of the Centre for Investor Education (CIE). Ms Donnelly has also served as chair of Donnelly Money Management (\$1bn in FUA), deputy chairperson of VFMC (\$47bn FUM), and a director of: Unisuper (\$50bn in FUM); Ashmore Group plc (\$61bn FUM); Health Super (\$9bn FUM); Network 10 Limited, and the Australian Accounting Standards Board.

Bob Henricks was appointed a Non-Executive Director of CCI's Board, Investment Committee and Risk & Compliance Committee in 2017. Bob was previously the 20-year Chairman of the \$6 billion super fund, Energy Super. In 2015, he was named 2015 Trustee of the Year by the Australian Institute of Superannuation Trustees. He currently serves as a director of the \$2 billion Gardior Infrastructure Fund and the University of Queensland Diamantina Institute Business Development Board. Bob was previously chair of the SPEC(Q) and AUST(Q) super funds, and a director of the CBUS super fund. Bob brings substantial governance, compliance and risk management expertise to the business.

Alex Wise is an Independent Compliance Committee Member. Wise previous role was as Head of Fund Services and Chief Operating Officer at OneVue RE Services Limited. Prior to that Wise was the founder of Orchard Harbour (Pty) Limited, an alternative investment consultancy business established in Sydney.

Key person risks (i.e. one PM leaving CCI), and the potential that this adversely affects CCI's investment process and performance, which is usually associated with boutique style investment teams, is an area of risk given there appears to be a strong collaborative approach in security research, selection and the portfolio construction process.

However, as the portfolio managers are significant shareholders in the business and along with the investment team collectively own 75% of CCI, which in turn owns 100% of SMI, and investment guidelines are transparent, prescriptive and monitored by a quantitative risk management system and overseen by an investment committee with independent members this risk is, to some extent, mitigated. CCI also has key man insurance in place covering Joye and Harvey.

The majority of the investment team own equity in CCI, and a portion of bonuses are generally paid in equity via the ESOP. Non-investment team members can also participate in the ESOP. Part-time employees are classed as "contractors" and remunerated on a base salary and/or hourly basis.

Remuneration comprises base salaries and bonuses that are determined by CCI's board based on a scorecard that accounts for performance

Track Record

The senior PMs Joye and Harvey have established CCI/SMI with a seven-year-plus track-record in the top three deciles of enhanced cash/short-term fixed interest managers in each calendar year since inception. The Fund itself has also performed in the top three deciles for each calendar year since its inception in October 2014. (*Source: FE Analytics*)

PM Harvey has a history of building investment management teams, assisting in establishing Fay Richwhite's (1988 – 1992) Australian fixed interest rate derivatives business, Deutsche Bank Australia's option market-making function (1992 – 1997) and more recently setting-up Bower Capital to invest his own funds in the interest rate securities markets and since 2011 helping run SMI/CCI.

Prior to establishing SMI/CCI in 2011, PM Joye worked as an analyst with Goldman Sachs in London and Sydney, and the Reserve Bank of Australia. He

Disclaimer: Atchison Consultants recommend that investors read the detailed information contained in the Product Disclosure Document. Investors should read the Analyst Interest and Certification, Warning (General Advice Only) and Disclosure (Commissioned Research) at the end of this report.

subsequently served as a portfolio manager helping run \$250 million of assets securing patented structured loans between 2007 and 2011 that had an “A” rating from Mercer and generated strong absolute returns during the global financial crisis and thereafter. He was the principal author of the 2003 Prime Minister’s Home Ownership Task Force report on the demand- and supply-sides of the housing market and advised the Rudd Government on the development of a \$20 billion investment program into mortgage-backed securities during the GFC. In 2010, he helped draft the first terms of reference for Treasurer Joe Hockey’s Financial System Inquiry and has led the public debate on Australian bank and housing risks in his capacity as a Contributing Editor with the Australian Financial Review.

Investment Process

Investment Philosophy

CCI’s investment process has been structured on the following broad investment philosophy:

- CCI believes in cash and fixed income securities’ risk adjusted diversification. Based on return targets of CPI plus 3-4% p.a. and empirical mean-variance optimisation analysis, CCI believes Australian savers’ asset-allocation decisions have historically resulted in them taking on unnecessarily high exposures to equities, including listed Australian and global equities, unlisted commercial property equities, and private equity. At the same time, CCI is of the opinion that savers have historically had insufficiently high portfolio weights to cash securities, FRNs, and fixed-rate bonds, which have offered relatively attractive risk-adjusted returns.
- CCI believes cash is a powerful inflation hedge. With the central bank’s formal “inflation-targeting” mandate (as documented under the Statement on the Conduct of Monetary Policy), Australian cash securities and FRNs have delivered attractive “real” or inflation-adjusted returns. The RBA cash rate plus 1% per annum has yielded strong real, inflation-adjusted returns of approximately 3.5% per annum since 1990.
- Despite CCI believes that long-term interest rate duration is a major source of risk and argues that long-term duration is impossible to predict, they see that the interest rate-related financial markets present systematically attractive short-term opportunities to exploit pricing inefficiencies around major macroeconomic events, such as RBA cash rate decisions, and the release of tier-one economic data.
- CCI believes that there are inherent unexploited inefficiencies in the Australian cash and fixed-income markets due to: (1) weak economic incentives in the form of very low fees encouraging very passive, hold-to-maturity investment styles and a paucity of active investment management (and top human talent), which means asset pricing is not as efficient as it should be; and (2) opaque price discovery as a function of the fact that wholesale bonds settled through the ASX-owned Austraclear do not require prices to be publicly disclosed, which means that rapid information flows are thwarted. This again opens-up opportunities for nimble active managers to exploit these discrepancies.
- CCI believes that by applying rigorous bottom-up and top-down valuation process, active managers can add considerable value by dynamically adjusting portfolios for relative value opportunities between cash and FRNs.

Disclaimer: Atchison Consultants recommend that investors read the detailed information contained in the Product Disclosure Document. Investors should read the Analyst Interest and Certification, Warning (General Advice Only) and Disclosure (Commissioned Research) at the end of this report.

- CCI believes that the combination of human talent on a cross asset-class basis with a commitment to comprehensive quantitative asset pricing (valuation) on both a bottom-up and top-down basis supported by more traditional qualitative due diligence would enable CCI to identify and exploit mispriced assets to deliver true “alpha”, or risk-adjusted excess total returns, over and above the passive yield provided by those assets.

Investment Style

CCI’s investment style can be described as an active short-term fixed-interest strategy. It seeks to generate a consistent return for investors above the RBA cash rate of between 1.5% to 3.0% p.a. after fees. This is achieved through using a combination of Australian deposits, investment-grade bonds and hybrids issued by banks and companies. The Fund is structured with the objective to provide investors with exposure to wholesale bond market.

The investment framework focusses on determining the fair value of a security using a variety of quantitative methods, and hence assets that are trading above or below fair value, after adjusting for a range of risk factors, including the probability of default, recovery rates, credit ratings, capital structure position, time to maturity, industry sector, issue sizes, and liquidity. The framework also considers how a security contributes to the overall risk and return characteristics and investment objective of the portfolio. CCI’s investment style considers and leads to the following:

- Conventional credit research of both the issuer and the specific security with the analyst having veto over any investment on risk grounds.
- Top-down quantitative valuation analysis to assist in calculating the fair value of a

security versus its peers after controlling for its risk factors using regression methods.

- Fundamental bottom-up quantitative valuation analysis that computes the probability of default, expected loss, and minimum required return on a security based on its capital structure position and the issuer’s financials, including leverage and projected asset volatility, using option pricing technology.
- A macro-economic and intensive due diligence overlay that evaluates industry conditions, supply and demand technical, and all exogenous factors that could impact asset pricing.
- Attribution analysis at the portfolio level to evaluate a security’s contribution to overall return and risk.
- PM approval on pricing, sizing and entries and exits.

The Fund predominantly invests in floating rate notes (i.e. bonds) and cash securities with a targeted weighted-average “A-” S&P credit rating, and investment grade ASX listed hybrids up to 15% of the portfolio. The Fund however can also invest in unlisted debt securities (10% max).

Investment Process

The investment process for SMHI is based on the premise that value can be added through:

- Actively managing the cash portfolio (i.e. continuous management to source the best possible interest rates on deposits relative to credit risk). Deemed by CCI as a modest contributor to alpha.
- Active asset selection of bonds identified via top-down and bottom-up valuation analysis to relentlessly seek and identify assets that are cheap relative to the managers assessment of fair value and which have a high likelihood of converging back to fair

Disclaimer: Atchison Consultants recommend that investors read the detailed information contained in the Product Disclosure Document. Investors should read the Analyst Interest and Certification, Warning (General Advice Only) and Disclosure (Commissioned Research) at the end of this report.

value and thus providing capital gains, CCI concludes is the major source of alpha.

- Active asset-allocation within the portfolio between pure cash and riskier debt/hybrid securities depending on the PM's views of the relative value available in each asset-class. When debt securities are expensive, they will revert to cash, and vice-versa. The Fund retains the ability to invest 100% in cash.

The investment process is regulated by the Investment & Governance Mandate (IGM) dated September 2018. See Table 1 for Portfolio Construction Policies.

Table 1: Portfolio Construction Policy

Portfolio Construction Policy	
Unlisted, Unrated debt	10%
ASX listed hybrids	15%
Debt not listed on Austraclear or ASX or Australian-dollar securities governed under Australian law, settled via Euroclear.	0%
Foreign denominated debt not settled by venue equivalent to Austraclear or ASX	0%
Australian or global shares (excl. ASX listed bonds)	0%
Long-term fixed-rate bonds (>12mths) unless swapped to floating with AA-rated counterparty	0%
Collateralised debt obligations	0%
Issues sizes <\$50m	0%
Inflation-linked bonds	0%
Gearing the Fund	No, unless using RBA liquidity facilities
Hybrids, defined as preferred equity, convertible preference shares, capital notes, Tier 1 capital securities and/or equivalents that sit between subordinated bonds and ordinary equity.	15%
At-Call Cash ETFs	20% per issuer
Non-prime mortgages	0%

Investment in or funding of related party issued securities or issued loans	0%
---	----

Source: Smarter Money Investments Pty Ltd (2018)

Portfolio construction rules are subject to capital limitations and portfolio reweighting events. Core portfolio > 90%.

Tables 2 & 3 below lists the Portfolio Construction Investment Limits.

Table 2: Portfolio Construction Investment Limits – Core Portfolio

Portfolio Construction Investment Limits - Core Portfolio (Over 90%)	
Target weight to at-call bank deposits with APRA regulated ADI	0% to 10%
Target weight at-call deposits and term deposits with APRA-regulated ADI with maturities <12 months	0% to 10%
Target weight to at-call deposits, term deposits and other RBA repo-eligible cash equivalent securities with APRA-regulated ADIs with maturities <12 months	5% to 10%
Min. exposure to cash instruments	2%
Max. target weight to credit unions/building societies in deposit portfolio	15%
Maximum target weight to foreign-owned subsidiary banks regulated by APRA in deposit portfolio	30%
Maximum target weight to deposits with issuers with short-term S&P (or Moodys where S&P not available) credit ratings of less than A-2	30%
Target weight to investment grade, Australian dollar-denominated and issued, floating rate notes and hybrids	92.5%
Maximum exposure to non-deposit debt securities or hybrids	98%
Target weight to Term Deposits	25%
Minimum (target) number of bond issues	5 (30) issues
Maximum (target) exposure to any one issuer at origination, excluding ADI deposits	33% (10%)
Target weighted-average S&P credit rating (or Moodys where	A-

Disclaimer: Atchison Consultants recommend that investors read the detailed information contained in the Product Disclosure Document. Investors should read the Analyst Interest and Certification, Warning (General Advice Only) and Disclosure (Commissioned Research) at the end of this report.

S&P not available), excluding ADI bank deposits

Target weighted-average time to maturity	3.5 years
--	-----------

Max. portfolio weight to RMBS 33% in total

Source: Smarter Money Investments Pty Ltd (2018)

Table 3 below lists the investment guidelines to be adopted when hedging macro-economic risk in the portfolio.

Table 3: Portfolio Construction Limits – Hedging Portfolio

Hedging Portfolio ≤ 10% (Hedging Macro-Economic Risk)	
Max. cash investment in Hedging universe securities	10% of portfolio value
Target time-weighted exposure to Hedging universe securities	≤ 2.5% of portfolio value
Max. calendar year Hedging budget	Greater of 0.5% of the Fund’s value at the start of the year or post fees Hedging returns added to returns during year
Max. Hedging budget in calendar month	Subject to Annual Hedging Budget, 50% of Fund’s post-ICR monthly yield
Derivatives	Derivatives are used to hedge interest rate, credit and macro-economic risks through purchases of options only (or hedging of securities received under exercised options). Short positions must be backed by matched physical assets; long derivatives positions must be matched by cash equivalents. Only purchases permitted, unless hedged

Source: Smarter Money Investments Pty Ltd (2018)

CCI is cognisant of the requirement to provide investors with liquidity, for Liquidity Guidelines refer to Table 4.

Table 4: Liquidity Guidelines

Liquidity Guidelines

Target 30% - 50% of Fund’s assets in cash and RBA repo-eligible securities

The Fund will be able to draw on the RBA’s liquidity facilities through access to RBA repurchase facilities provided by a major Australian bank

At origination 100% of the Fund’s assets will have an expectation of daily liquidity under normal trading conditions

Source: Smarter Money Investments Pty Ltd (2018)

Portfolio Construction

The portfolio construction process follows three phases: Investment & Governance Mandate (IGM) Rules, the analysis, and the review & compliance. See Appendix 1z for Portfolio Construction – Decision-Making Process schematic.

Step 1 – Mispricing Analysis

SMI/CCI’s process begins with identifying mispricings in credit securities that have a high probability of mean-reverting to CCI’s modelled fair value. This process uses top-down and bottom-up valuation approaches in 20-30 models for each analysis that take in account factors such as:

For top-down models (“market-efficient” assumptions):

- Credit ratings
- Maturities
- Issue size
- Industry sector
- Capital structure position
- Liquidity

For bottom-up models (“market-inefficient” assumptions):

- Assets
- Liabilities
- Leverage
- Equity volatility
- Projected assets volatility
- Projected probability of default or the probability distribution around defaults
- Projected loss given default

Disclaimer: Atchison Consultants recommend that investors read the detailed information contained in the Product Disclosure Document. Investors should read the Analyst Interest and Certification, Warning (General Advice Only) and Disclosure (Commissioned Research) at the end of this report.

Step 2 – Deep-dive credit analysis

A deep dive credit analysis is conducted on the core business model to identify any inherent business model risks. This report is then reviewed and debated in an iterative process that involves extending the analysis with further research.

Step 3 – Bottom-Up Credit Analysis

The Fund's IGM narrows the investable universe from which credit research is to be performed. Credit analysts carry out independent bottom-up research using current credit data and financial statements based on sector responsibilities. This is performed to determine the degree of risk involved and credit worthiness of investing in a security. The analysts also utilise CCI's proprietary credit rating model, which is a quantitative amalgam of rating agency approaches and provides a unique issuer rating that can be contrasted against public ratings. All "recommendations" are supported by written credit research reports. Approval from the credit analysts is required before proceeding with an investment.

Step 4 - Macro Analysis & Other Due Diligence

Steps 1 and 2 are supported with macro-economic analysis and additional industry and security due diligence driven by the PMs. This includes macro research focussing on short-term event risks such as GDP, inflation, jobless rate, RBA decisions etc. within T+3 months, mid-term macro events that will influence pricing over 6 to 12 months e.g. global macro growth paths and policy decisions, as well as longer-term secular drivers such as; conflict risks, demographic change through population growth and ageing etc. CCI deems that these variables may not be immediately evident through bottom-up credit analysis but may influence the future credit rating and price of a security and therefore its inclusion within the portfolio. The PMs further supplement the credit/quantitative research process with their own independent credit, valuation, other due

diligence that will typically involve discussions with issuers, customers, competitors and other key stakeholders.

Step 5 – Portfolio Contribution/Attribution

Securities identified through steps 1 to 3 are incorporated, modelled and examined to ascertain their influence and contribution to the total portfolio from a risk and return perspective utilising the Bloomberg Asset & Investment Management (AIM) system, which evaluates the impact of all new investments on a wide range of portfolio attributes, including more than 20 different pre-trade compliances and other IGM rules.

Step 6 – Approval by Portfolio Managers

All final pricing, sizing, positioning, and timing is determined jointly by the PMs. In practice, Joye runs the process on an intra-day basis with Harvey having veto on all decisions and providing general risk and macro-market insights and mentoring to the overall team.

Buy / Sell Decisions

All trades are monitored and reviewed by:

- Portfolio Managers (internal - daily)
- Responsible Entity (external - daily)
- CCI Investment Committee (monthly)

All trades are managed and settled via the Fund's external administrator and custodian.

Trigger points that instigate a security review are:

- Non-compliance with IGM
- Price movement of +/-1% or more from entry price
- Price changes in relation to fair value estimate

Information Resources & Research Approach

Disclaimer: Atchison Consultants recommend that investors read the detailed information contained in the Product Disclosure Document. Investors should read the Analyst Interest and Certification, Warning (General Advice Only) and Disclosure (Commissioned Research) at the end of this report.

CCI utilise both internal and external sources of information to identify, research and analyse a diverse series of suitable securities.

Research Team

CCI continues to invest in its full-time research/investment team which has doubled since the last review. CCI now has four full-time PM's who also have dual analyst responsibilities, four full-time credit analysts, two full-time data scientists, a portfolio management director, portfolio analyst and a senior operations analyst. CCI also employ a credit analyst on a part-time basis.

Internal Research

The internal research program is comprehensive and is constantly improving. Currently the program includes:

- 20-30 different quantitative valuation models that have been all built in-house
- An in-house econometric quantitative credit rating model
- More conventional credit research that one would find at standard fixed-income shops covering traditional variables
- Internal macro research and industry/company due diligence

CCI also has access to third party research and data to augment its own research and security analysis.

External Research

CCI subscribes and receives information from several sources. Financial data includes:

- Yieldbroker (real-time bond data)
- S&P Capital IQ (credit data)
- Bloomberg (security, trade management/compliance and economic data)

Access to external research and data is viewed as having multiple advantages:

- Indicator of market expectations for a security
- Potential to highlight to the PMs any significant deviations between consensus and the PM's forecast, credit rating valuation etc
- Reveal information that the analysts may not have initially recognised

ESG Policy

CCI views current measures of sustainability and ethical governance as subjective in nature and thus does not follow a checklist in accounting for ethical, social & governance (ESG) issues.

Coolabah uses ESG concepts by factoring in considerations, such as weather-related risks, political stability and board composition, into its valuation process. This allows the Fund to identify where a price may deteriorate due to underlying ESG issues, or where credits are undervalued due to ESG issues that the manager expects to improve. This allows ESG concepts to be a factor in driving alpha.

Implementation

SMHI is accessible via a Managed Investment Scheme (MIS) registered with the Australian Securities and Investments Commission (ASIC). The Fund structure is a unit trust governed by a constitution. Investors' monies are pooled together under the Fund arrangement to buy institutional investments/securities.

An investor's interest in the Fund is represented by their holding of units in the Fund. Investors do not hold/own a direct share of the Fund's underlying assets.

Disclaimer: Atchison Consultants recommend that investors read the detailed information contained in the Product Disclosure Document. Investors should read the Analyst Interest and Certification, Warning (General Advice Only) and Disclosure (Commissioned Research) at the end of this report.

Applications can be made directly by the investor through the mFund settlement service which employs the ASX's electronic settlement system CHESS to process buying (applying for) and selling (redeeming) of units in SMHI. Units in SMHI are held electronically and linked to the investors Holder Identification Number (HIN), a unique identifier used to transact on the ASX.

An application for units in SMHI can also be made by using the appropriate online application form available on the SMI website.

Transactions via administration platforms can also be made, however these are consolidated by the platform administrator prior to an investment or redemption being made.

Risk Management and Compliance

Risk Management

Investment Risk Management

In broad terms, investment risk is managed via the IGM framework which specifies the portfolio construction rules and limits. This is monitored by CCI's pre-trade compliance system which evaluates all investments against the IGM. The results of the pre-trade compliance system's analysis are sent to the PMs, the RE and other stakeholders.

CCI's Board sets, monitors and reviews the IGM.

Refer to Tables 2, 3 and 4 for mandatory investment risk management constraints, guidelines and limits as set-out in the IGM.

Interest rate and credit risk is minimised by:

- Investing in cash and floating-rate debt securities and is prohibited from investing in fixed-rate debt securities with more than 12 months term to maturity.

- Targeting a weighted-average S&P credit rating (or Moody's where S&P not available), of "A-" across the portfolio.
- Monitoring the Fund's maximum value-at-risk including basis credit risk estimates monthly.
- Conducting stress tests around various scenarios to determine their impact on the fund's value on a quarterly basis.

Administrative Risk Management

The following back-office functions are out-sourced:

- Responsible Entity – EQT Responsible Entity Services Limited
- Administration – Mainstream Fund Services
- Custody - BNP Paribas
- Distribution - Winston Capital (Retail and financial planning sales), Shed Enterprises (Institutional sales).

Smarter Money Investments (SMI), CCI's fully owned subsidiary, also serves CCI's retail and financial planning distribution channels.

Operational Risk Management

CCI has its own Business Continuity & Disaster Recovery Plan (BCDRP). The BCDRP focuses on mitigating the risks arising from people, systems and processes through which the organisation operates. CCI has access to 24/7 offsite emergency office infrastructure provided by Servcorp with all key systems able to be accessed via the web and daily offsite backups. CCI uses the Complispace system for enterprise risk management, which embeds a range of CCI's internal policies including:

- BCDRP
- Conflicts of Interest Policy
- Soft Dollar Policy
- Trade Management Policy
- Derivatives Policy

Disclaimer: Atchison Consultants recommend that investors read the detailed information contained in the Product Disclosure Document. Investors should read the Analyst Interest and Certification, Warning (General Advice Only) and Disclosure (Commissioned Research) at the end of this report.

- ESG Policy
- And others

Derivatives Risk Management

Derivatives can be only used to hedge interest rate, credit and macro-economic risks through the purchase of options. Short positions must be backed by matched physical assets and long derivative positions must be matched by cash equivalents. Derivatives cannot be used to gear or leverage the Fund for higher returns.

Compliance

The Compliance Committee meets on a monthly basis over the year to evaluate all internal and external compliance.

CCI has designed and implemented its Compliance Program according to Australian and International Standard for Compliance Management Systems, which is embedded in the CompliSpace electronic infrastructure. All policies and procedures are regularly updated for any regulatory change by their internal team, which is comprised of 15 lawyers.

CCI also runs extensive pre-trade and post-trade compliance of all investments by junior portfolio managers via CCI's customised Bloomberg AIM system with the results sent daily to the investment team, the RE and other stakeholders.

Fees and Costs

SMHI charges the following fees to investors. Fees shown are inclusive of GST and administration expenses and consider RITC.

Administration & Management Fee

0.69% p.a. of the net asset value of the Fund.

Performance Fee

22.5% of the net excess out-performance versus the benchmark and high watermark, being RBA official

target cash rate plus 2.19% p.a. calculated every calendar month. The high watermark equates to the cumulative monthly performance of the Fund including distributions but before performance fees since inception.

Buy/Sell Spread

0.00%/0.10%

Incorporated into the Fund's unity price and incurred when an investor withdraws from the Fund.

Liquidity

SMHI offers liquidity on a T+3 days basis during normal market conditions. Timing of any redemption of units is otherwise determined by the liquidity of the underlying investments and the efficiency of the platform administrator and SMI's administrator (Mainstream Fund Services).

Performance

SMHI inception date was 14 October 2014. For investment performance measurement purposes, the inception date used is 31 October 2014.

Refer to Appendix 2 for an analysis of the investment performance and risk metrics of SMHI at May 2018.

Performance (net of fees) against the Fund's benchmark and excess return is provided in Table 5 below.

Table 5: Performance (SLT0052AU) to 30 June 2019. (net)

	Smarter Money Higher Income Fund	Benchmark (RBA +1.5% p.a.)	Excess Return
1 Months (%)	0.42	0.23	0.19
3 Months (%)	1.19	1.0.73	0.46
6 Months (%)	2.32	1.47	0.85
1 Year (% p.a.)	3.36	3.00	0.36
3 Years (% p.a.)	3.37	3.02	0.35

Disclaimer: Atchison Consultants recommend that investors read the detailed information contained in the Product Disclosure Document. Investors should read the Analyst Interest and Certification, Warning (General Advice Only) and Disclosure (Commissioned Research) at the end of this report.

Since Inception (% p.a.)	3.33	2.25	(0.06)
-----------------------------	------	------	--------

Source: Morningstar

Conclusion

- The Fund has met its benchmark, continuing the long-term trend of being slightly above its benchmark (Performances has been provided in Appendix 2).
- Based on Atchison Consultant's assessments, we expect the Fund to deliver a reasonable risk-adjusted return based on its current investment strategy.

Strengths

- ✓ Senior portfolio managers have been working together since inception of the Fund, indicating a cohesive investment environment.
- ✓ Experienced investment team of twelve full time investment professionals (4x PM's and 8x Analysts) is sufficiently resourced.
- ✓ Combination of quantitative valuation analysis and active trading leads to an understanding of the contribution to risk and return of the portfolio.
- ✓ The Manager has demonstrated a commitment to continually improve resourcing and investment processes (including ongoing enhancements to quant models).
- ✓ The team are co-invested in the fund. Their interests are very much aligned with their clients.

Weaknesses

- The Fund has not yet been managed through a complete investment cycle.
- 22.5% performance fee is deemed high on a relative basis.
- With growing FUM the potential to continue to deliver strong excess returns may diminish due to inability to take meaningful positions. Notably, management is cognisant of FUM's impact

on performance and suggest necessary action will be in place to minimise this impact.

- The risk of key staff departures may have an adverse effect while this has been partially addressed through equity sharing arrangements.

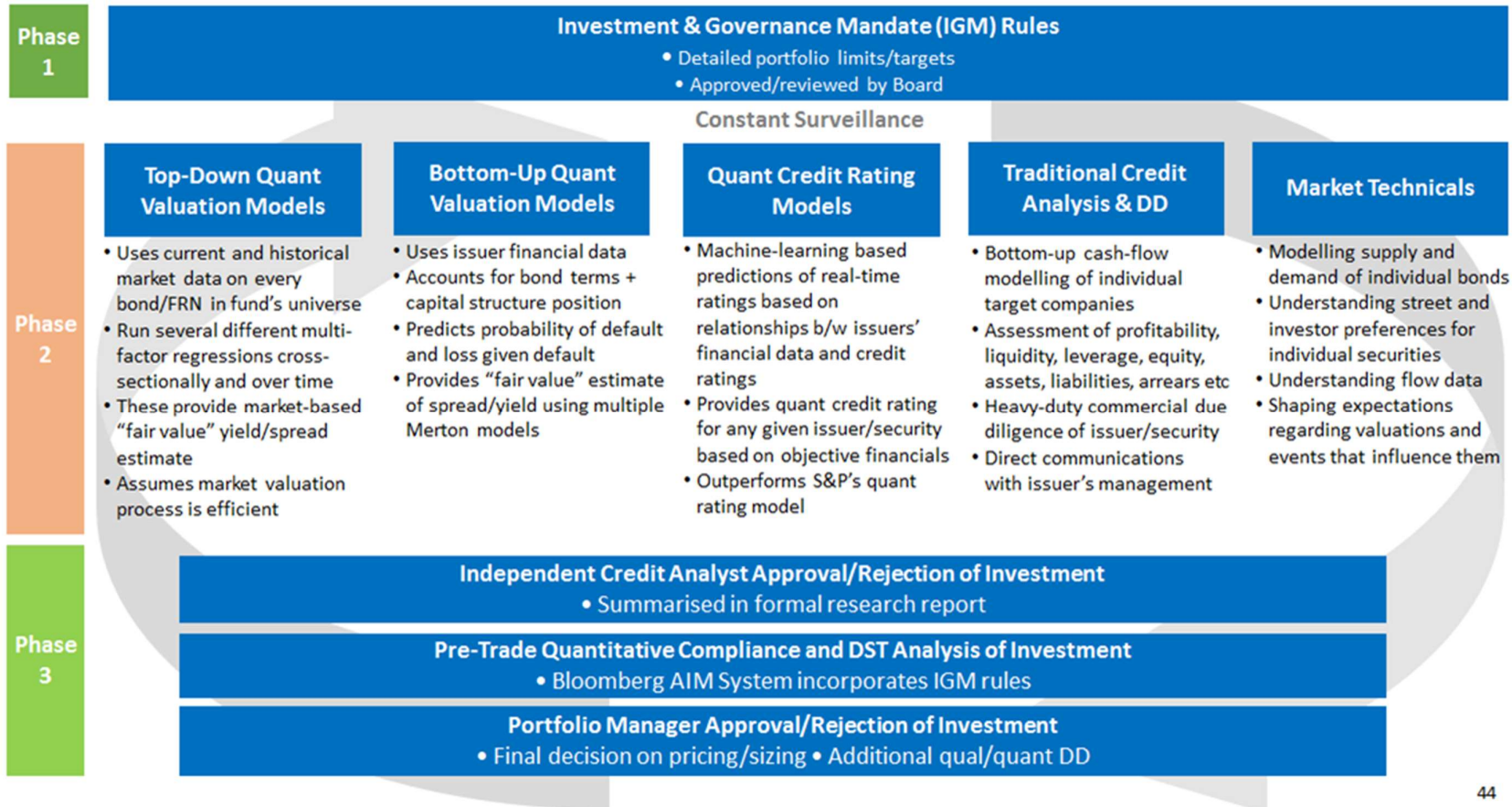
Rating Summary

Rating: Highly Recommended



Disclaimer: Atchison Consultants recommend that investors read the detailed information contained in the Product Disclosure Document. Investors should read the Analyst Interest and Certification, Warning (General Advice Only) and Disclosure (Commissioned Research) at the end of this report.

Appendix 1: Portfolio Construction – Asset-Selection Process



Source: Smarter Money Management

Disclaimer: Atchison Consultants recommend that investors read the detailed information contained in the Product Disclosure Document. Investors should read the Analyst Interest and Certification, Warning (General Advice Only) and Disclosure (Commissioned Research) at the end of this report.

Appendix 2: Smarter Money Higher Income Fund- Strategy Performance Analysis

Smarter Money Higher Income

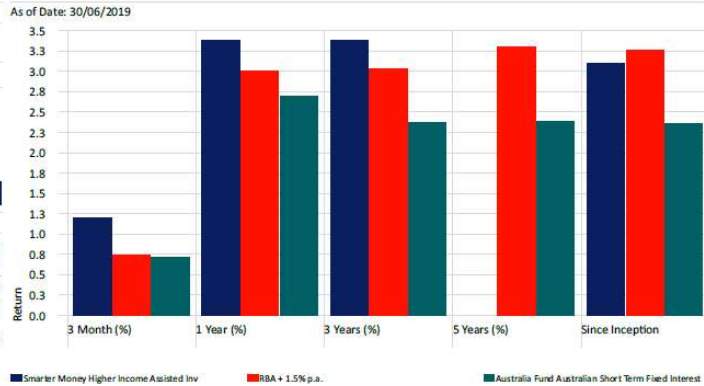


Performance

As of Date: 30/06/2019

	3 Month (%)	6 Month (%)	1 Year (%)	3 Years (% p.a.)	Since Inception
Smarter Money Higher Income Assisted Inv	1.19	2.32	3.36	3.37	3.19
RBA + 1.5% p.a.	0.73	1.47	3.00	3.02	3.25
Australia Fund Australian Short Term Fixed Interest	0.72	1.59	2.68	2.37	2.36

Returns



Risk Metrics

Time Period: 1/10/2014 to 30/06/2019

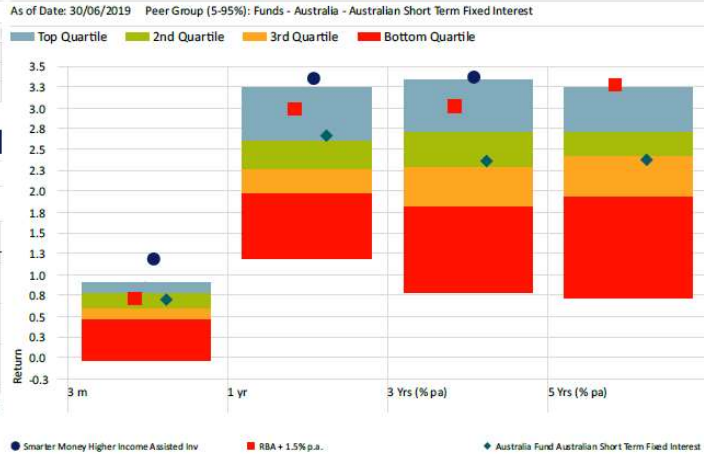
	Excess Return	Std Dev	Sharpe Ratio	Gain/Loss Ratio	Tracking Error	Batting Average
Smarter Money Higher Income Assisted Inv	-0.06	0.79	1.42	12.74	0.79	56.14
RBA +1.5%	0.00	0.09	25.83		0.00	100.00
Australia Fund Australian Short Term Fixed Interest	-0.88	0.22	1.45		0.23	10.53

Correlation Matrix

Time Period: 1/10/2014 to 30/06/2019

	1	2	3
1 Smarter Money Higher Income Assisted Inv	1.00		
2 RBA + 1.5% p.a.	-0.03	1.00	
3 Australia Fund Australian Short Term Fixed Interest	0.78	0.09	1.00

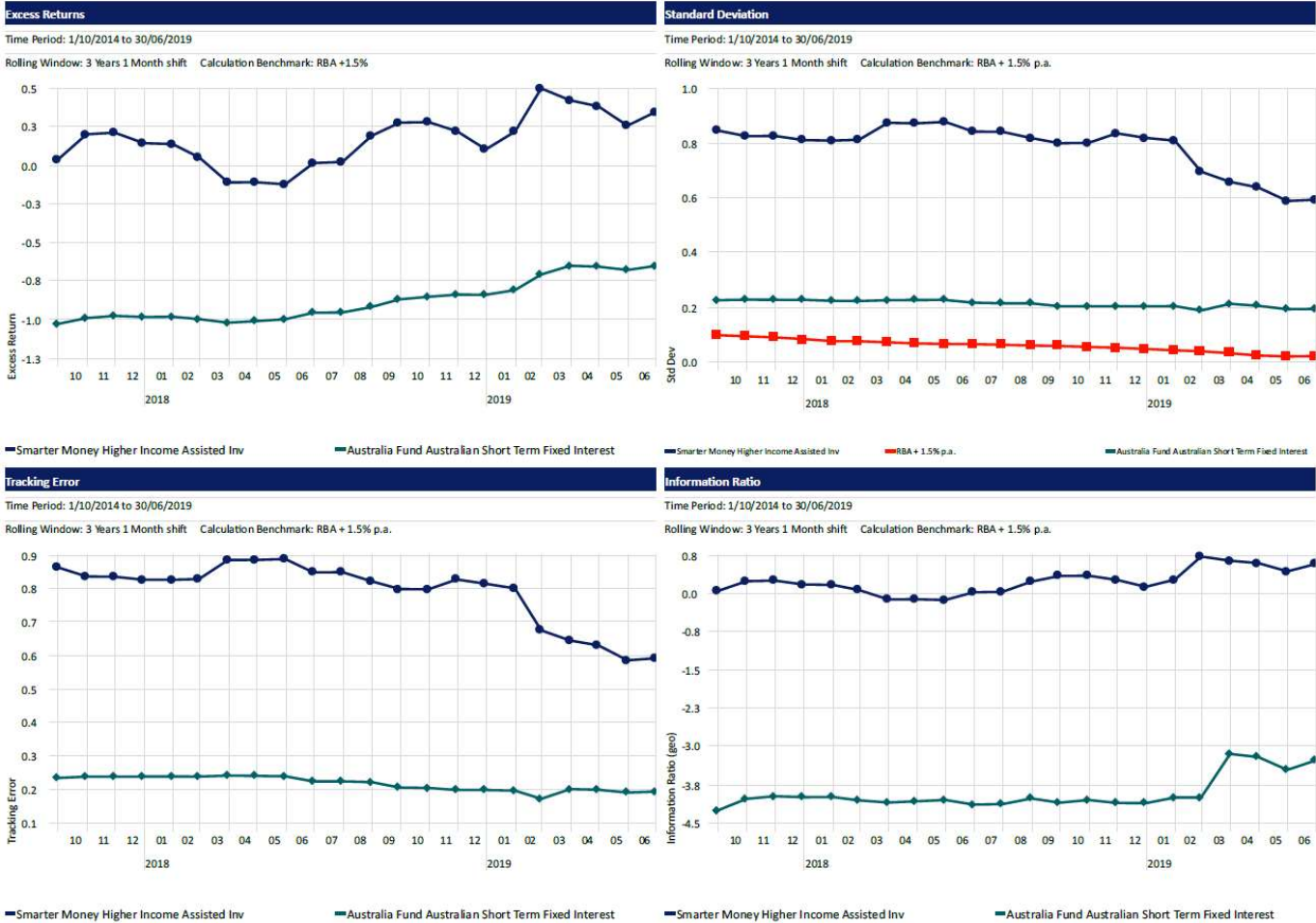
Performance Relative to Peer Group



Risk-Reward



Disclaimer: Atchison Consultants recommend that investors read the detailed information contained in the Product Disclosure Document. Investors should read the Analyst Interest and Certification, Warning (General Advice Only) and Disclosure (Commissioned Research) at the end of this report.



Source: Morningstar

Disclaimer: Atchison Consultants recommend that investors read the detailed information contained in the Product Disclosure Document. Investors should read the Analyst Interest and Certification, Warning (General Advice Only) and Disclosure (Commissioned Research) at the end of this report.

Sources of Information

In addition to a site visit and multiple manager interviews, the following sources of information have been relied upon in preparing this report:

- CCI Institutional Presentation (Dated: July 2019)
- SMHI Performance Snapshot (Dated: July 2019)
- Smarter Money Higher Income Fund PDS (Dated: May 2019)
- Investment & Governance Mandate (Dated: September 2018)
- Environmental, Social and Governance Policy (Dated: October 2018)
- Investment Management Agreement BetaShares Active Australian Hybrids Fund

Report Expiry Date

Date Report Prepared: 30 June 2019

Report Expiry Date: The Atchison Consultants report is a point in time assessment and expires after 12 months or if there are any material changes in relation to the information contained in this report or any disclosure or offer document issued in relation to this offer. Atchison Consultants reserves the right change its opinion, rating and/or withdraw the report at any time on reasonable grounds.

Report Prepared By: Jake Jodlowski
Lindsay Tupper-Creed

Report Authorised By: Jake Jodlowski

Statement of Analyst Interest and Certification, Warning and Disclosure

Atchison Consultants' Financial Services Guide has been provided to Smarter Money Investments Pty Ltd. Retail investors may obtain this directly from Atchison Consultants using the contact details below. The Financial Services Guide is designed to assist retail investors in their use of any financial product advice in this Report.

Analyst Interest and Certification:

The Analyst(s) does not hold an investment in this product. The Analyst(s) certifies that with respect to content covered in this report: (1) all of the views expressed accurately reflect his or her personal views about the product; and (2) no part of his or her compensation was, is, or will be, directly or indirectly, related to the specific recommendations or views expressed by that research analyst in the research report.

Warning (General Advice Only):

This report is prepared for Smarter Money Investments Pty Ltd. The report contains recommendations and advice of a general nature and does not have regard to the particular circumstances or needs of any specific person who may read it. Investors should assess either personally or with the assistance of a licensed financial adviser whether the Atchison Consultants recommendation or advice is appropriate to their situation before

Disclaimer: Atchison Consultants recommend that investors read the detailed information contained in the Product Disclosure Document. Investors should read the Analyst Interest and Certification, Warning (General Advice Only) and Disclosure (Commissioned Research) at the end of this report.

making an investment decision. The information contained in the report is believed to be reliable, but its completeness and accuracy is not guaranteed. Opinions expressed may change without notice. Atchison Consultants does not accept any liability, whether direct or indirect arising from the use of information contained in this report. No part of this report is to be construed as a solicitation to buy or sell any investment. Atchison Consultants does not accept any responsibility to inform you of any matter that subsequently comes

Disclosure (Commissioned Research):

Atchison Consultants has received a fixed fee, established prior to commencement of work, plus travel expenses from Smarter Money Investments Pty Ltd for the preparation of this report. Atchison Consultants applies a strict and rigorous process for the production of research reports and has no direct or indirect interest in the success or otherwise of this investment.

Atchison Consultants

Atchison Consultants was established in 2001 by Ken Atchison and consists of a team of investment professionals based in Melbourne with extensive experience in all aspects of financial markets.

The principal focus of the business is the provision of advice, research and analysis across all components of managing investment portfolios by financial institutions, superannuation and insurance funds and investment managers

Licence

TAG Asset Consulting Group Pty Ltd (ABN 58 097 703 047), trading as Atchison Consultants, is the holder of Australian Financial Services Licence Number 230846.

Contact Details

Atchison Consultants

Address: Level 3, 155 Queen Street, Melbourne, Victoria 3000

Phone: 03 9642 3835

Mobile: 0408 175 036

Fax: 03 9642 8886

Email: jake.jodlowski@atchison.com.au

Website: www.atchison.com.au

Disclaimer: Atchison Consultants recommend that investors read the detailed information contained in the Product Disclosure Document. Investors should read the Analyst Interest and Certification, Warning (General Advice Only) and Disclosure (Commissioned Research) at the end of this report.